

# Men's Firenze™ Vest Style 4550



## Product Information:

- 95% Polyester/5% Spandex; 5.45 oz. wt.
- Tailored for sophistication
- Dressier and more formal
- V-neck
- Matching buttons on placket
- Square bottom
- Two functional welt pockets
- Self fabric back
- Fully lined
- Sizes: S - 5XL (Talls have 1" longer body)

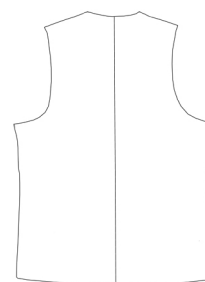
Front



## Care Details:

Machine Wash Cold  
Wash Separately  
Do Not Bleach  
Hang To Dry  
Warm Iron If Needed

Back



## Product Measurements

Sizes		S	M	L	XL	2XL	3XL	4XL	5XL
Chest		40	44	47	52	56	60	64	68
Center Back Length	Regular	26	26 <sup>3/8</sup>	26 <sup>3/4</sup>	27 <sup>1/8</sup>	27 <sup>1/2</sup>	27 <sup>7/8</sup>	28 <sup>1/8</sup>	28 <sup>1/2</sup>
	Tall	27	27 <sup>3/8</sup>	27 <sup>3/4</sup>	28 <sup>1/8</sup>	28 <sup>1/2</sup>	28 <sup>7/8</sup>	29 <sup>1/8</sup>	29 <sup>1/2</sup>

## Colors:



010  
Black

# Women's Firenze™ Vest Style 7550



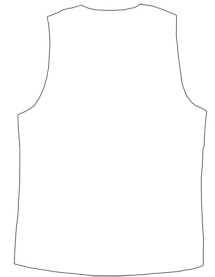
## Product Information:

- 95% Polyester/5% Spandex; 5.45 oz. wt.
- Tailored for sophistication
- Dressier and more formal
- V-neck
- Matching buttons on placket
- Square bottom
- Two functional welt pockets
- Self fabric back
- Fully lined
- Sizes: XS - 3XL

Front



Back



## Care Details:

Machine Wash Cold  
Wash Separately  
Do Not Bleach  
Hang To Dry  
Warm Iron If Needed

## Product Measurements

Sizes	XS	S	M	L	XL	2XL	3XL
Chest	34	36	40	44	48	52	54
Center Back Length	20 <sup>1/2</sup>	21	21 <sup>1/2</sup>	22	22 <sup>1/2</sup>	23	23 <sup>1/2</sup>

## Colors:



010  
Black