

Women's Pinstripe Flat Front Dress Pant Style 8569



Product Information:

- 55% Polyester/ 45% Worsted Wool
- 9 - 9.5 oz. wt.
- Waistband sits just below natural waistline
- Straight leg
- Hook and eye with nylon zipper
- Two front pockets
- Talls available
- Misses' sizes: 0 - 18 ~ Women's sizes: 18W - 28W

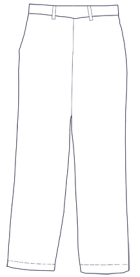
Front



Care Details:

Professional dry clean only.
Short cycle.
DO NOT BLEACH.
DO NOT TUMBLE DRY.
Steam iron ~ low.
Use press cloth.

Back



Product Measurements

Sizes		0	2	4	6	8	10	12	14	16	18
Waist		27 ^{1/2}	28 ^{1/2}	29 ^{1/2}	30 ^{1/2}	31 ^{1/2}	32 ^{1/2}	34	35 ^{1/2}	37	39
Inseam	Regular	35	35	35	35	35	35	35	35	35	35
	Long	37	37	37	37	37	37	37	37	37	37

Sizes		18W	20W	22W	24W	26W	28W
Waist		41	43	45	47	49	51
Inseam	Regular	35	35	35	35	35	35
	Long	37	37	37	37	37	37

Colors:



007
Navy



019
Charcoal

Women's Pinstripe Dress Skirt

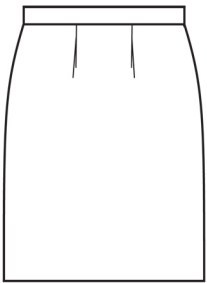
Style 9769



Product Information:

- t 55% Polyester/ 45% Worsted Wool
- t 9 - 9.5 oz. wt.
- t Classic cut, waistband sits just below natural waistline
- t No pockets and rear kick pleat
- t Fully lined
- t Nylon zipper with back closure
- t Misses sizes 0 - 18
- t Women's sizes 18W - 28W

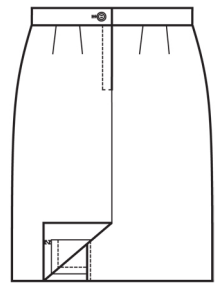
Front



Care Details:

Professional dry clean only.
 Short cycle.
 DO NOT BLEACH.
 DO NOT TUMBLE DRY.
 Steam iron ~ low.
 Use press cloth.

Back



Product Measurements

Sizes	0	2	4	6	8	10	12	14	16	18
Waist	27	28	29	30	31	32	33 ^{1/2}	35	36 ^{1/2}	38 ^{1/2}
Center Back Length	22	22 ^{1/4}	22 ^{1/2}	22 ^{3/4}	23	23 ^{1/4}	23 ^{1/2}	23 ^{3/4}	24	24 ^{1/4}

Sizes	18W	20W	22W	24W	26W	28W
Waist	41	43	45	47	49	51
Center Back Length	24 ^{1/4}	24 ^{1/2}	24 ^{3/4}	25	25 ^{1/4}	25 ^{1/2}

Colors:



007
Navy



019
Charcoal