



2016
SIGNATURE COLLECTION



5978 | 1978



signature

Oxford Non-Iron Dress Shirt

LONG SLEEVE – 60% cotton/40% polyester, 4.0 oz.

1978 Men's | 5978 Ladies \$39.90

FEATURES:

- French placket, no pocket, 2-button adjustable cuff
- Taped felled seams, single needle tailoring, easy to home launder
- Men's: modern fit, point collar/permanent stays, straight back yoke
- Ladies: feminine fit with bust and front/back darts, soft collar, straight back yoke

COLORS (Right, Top to Bottom):

011 Light Blue, 000 White, 061 French Blue, 019 Charcoal

SIZES:

Men's Regular S – 3XL; S/31/33, M/31/33/35, L – XL/33/35, 2XL – 3XL/35, Scale C

Men's Tall L – 6XL; L – 6XL/37, 4XL – 6XL/35, Scale C

Ladies XXS – 3XL, Scale J

DECORATION:

Embroidery



non
IRON

Prices apply to regular sizes XXS-XL and are subject to change.
Please inquire for pricing on larger sizes.

IRON
FREE

TAPED SEAMS MEAN
NO IRON
NO PROBLEM



NEW

5976 | 1976

signature

Oxford Non-Iron Dress Shirts

LONG SLEEVE – 60% cotton/40% polyester, 4.0 oz.

1976 **Men's** \$39.90

¾-SLEEVE

5976 **Ladies** \$39.90

FEATURES:

- Men's: button-down collar, left chest pocket, 2-button adjustable cuff, and back box pleat
- Ladies: open neck, French placket, soft collar, front/back princess seams, and ¾-sleeve with v-notch cuff
- Taped felled seams, single needle tailoring, easy to home launder

COLORS (Below, Top to Bottom):

011 Light Blue, 000 White, 061 French Blue, 019 Charcoal

SIZES:

Men's Regular S – 3XL; S/31/33, M/31/33/35,
L – XL/33/35, 2XL – 3XL/35, Scale C

Men's Tall L – 6XL; L – 6XL/37, 4XL – 6XL/35, Scale C

Ladies XXS – 3XL, Scale O

DECORATION:

Embroidery



*Prices apply to regular sizes XXS-XL and are subject to change.
Please inquire for pricing on larger sizes.*

IRON
FREE

TAPED SEAMS MEAN
NO IRON
NO PROBLEM





Pinpoint Oxfords

SHORT SLEEVE – 70% cotton/30% polyester, 4.25/4.5 oz.

1925 **Men's** Button-Down | 5925 **Ladies** \$27.90

LONG SLEEVE

1975 **Men's** Button-Down | 5975 **Ladies** \$29.90

1965 **Men's** Point Collar \$29.90

FEATURES:

- Cotton rich 80s two-ply fabric with single needle tailoring
- Men's: button-down or point collar, left chest pocket, 2-button adjustable cuff, and back box pleat
- Ladies: soft collar, no pocket, 2-button adjustable cuff, and straight back yoke seam
- Home launder

SIZES:

Men's Regular S – 3XL; S/31/33, M/31/33/35,

L – XL/33/35, 2XL – 3XL/35, Scale C

Men's Tall L – 6XL; L – 6XL/37, 4XL – 6XL/35, Scale C

Ladies XXS – 3XL, Scale J



DECORATION:

Embroidery

Prices apply to regular sizes XXS-XL and are subject to change.

Please inquire for pricing on larger sizes.

	1925	5925	1965	1975	5975
000 WHITE	•	•	•	•	•
001 BLUE	•	•		•	•
009 DARK GREY	•	•		•	•
061 FRENCH BLUE	•	•	•	•	•



1033



Spread Collar Dress Shirt

LONG SLEEVE – 66% cotton/30% polyester/4% spandex, 3.3 oz.

1033 Men's \$31.90

FEATURES:

- Point collar, French placket, matching buttons, and 2-button adjustable cuff
- Modern fit, and fabric has added stretch for comfort
- Wrinkle resistant and home launder

SIZES:





Men's Regular S – 3XL; S/32, M/33, L – 3XL/35, Scale D
Men's Tall L – 6XL; L – 6XL/37, Scale D

DECORATION:

Embroidery



Prices apply to regular sizes S-XL and are subject to change.
Please inquire for pricing on larger sizes.

	1033
 000 WHITE	•
 001 BLUE	•
 010 BLACK	•
 061 FRENCH BLUE	•



signature

Tailored Stretch Broadcloth Blouse

¾-SLEEVE, CLOSED NECK – 66% cotton/30% polyester/4% spandex, 3.3 oz.

5033 Ladies

\$31.90

FEATURES:

- Contemporary styling, ¾-sleeve length, French placket with matching buttons
- Contoured side seams with front/back darts
- Wrinkle resistant and home launder

COLORS (Right, then Below Left to Right):

804 Coral, 012 Red, 001 Blue, 000 White, 010 Black, 013 Burgundy,
061 French Blue, 204 Cucumber, 502 Violet

SIZES:

Ladies XXS – 3XL, Scale J

DECORATION:

Embroidery

*Prices apply to regular sizes XXS-XL and are subject to change.
Please inquire for pricing on larger sizes.*

5033





Tailored Stretch Broadcloth Blouses

LONG SLEEVE, V-NECK
66% cotton/30% polyester/4% spandex, 3.3 oz.

5034 Ladies \$31.90

¾-SLEEVE, V-NECK
5045 Ladies \$31.90

SHORT SLEEVE, OPEN NECK
5046 Ladies \$31.90

¾-SLEEVE, MATERNITY
5029 Ladies (S – 3XL) \$39.00

FEATURES:

- Contemporary styling, 3 sleeve lengths, 3 neckline styles, and French or narrow plackets with matching buttons
- Contoured side seams with front/back darts
- Wrinkle resistant and home launder

SIZES:

Ladies XXS – 3XL, Scale J
Ladies Maternity S – 3XL, Scale J

DECORATION: Embroidery

Prices apply to regular sizes XXS-XL and are subject to change. Please inquire for pricing on larger sizes.

	5029	5034	5045	5046
000 WHITE	•	•	•	•
001 BLUE		•	•	•
010 BLACK		•	•	•
012 RED		•	•	
013 BURGUNDY		•	•	
061 FRENCH BLUE	•	•	•	•
204 CUCUMBER		•	•	

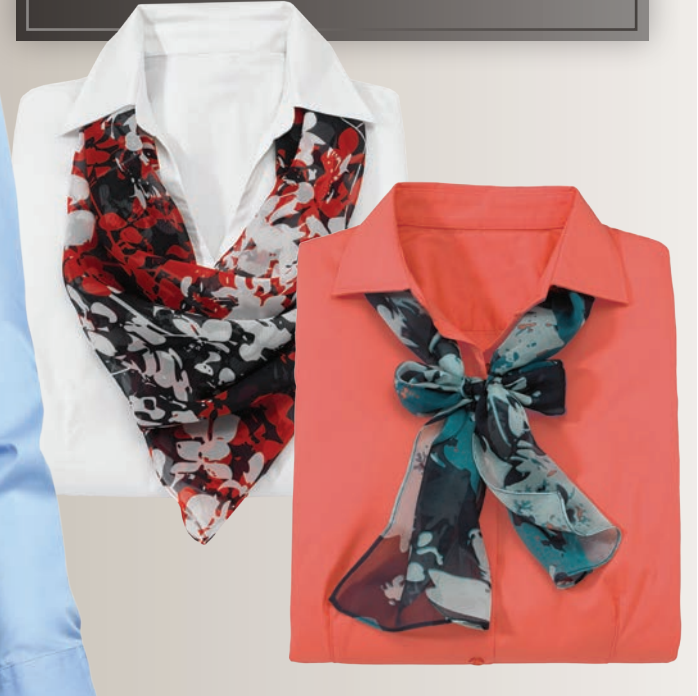


5034



WRAP UP YOUR LOOK

Visit pages 109-118 to see our beautiful neckwear options



5046



5029 Maternity

Sizes S - 3XL





8572 | 2574

**IRON
FREE** **NO IRON
NO PROBLEM**

OUR WRINKLE-FREE FABRIC LETS
YOU GO FROM DRYER TO DRESSED
IN NO TIME FLAT. AND, IT KEEPS
LOOKING GREAT ALL DAY LONG.



Microfiber Dress Pants, Shorts and Skirt

SHORTS – 100% polyester microfiber, 6.7 oz.

2474 **Men's**, Pleated Front, 9" inseam \$37.90

8422 **Ladies**, Flat Front, 9"/9½" inseam \$37.90

FLAT FRONT PANT

2574 **Men's** | 8572 **Ladies** \$43.90

PLEATED FRONT PANT

2674 **Men's** \$43.90

STRAIGHT SKIRT

9792 **Ladies** \$43.90

FEATURES:

- Shorts: traditional waistband, hook/eye closure, brass zipper, two front/back pockets (ladies has one)
- Pants: easy fit with hidden waistband providing two inches of adjustment, hook/eye closure, brass zipper, two front/back pockets (ladies has one)
- Skirt: traditional waistband, button closure, nylon zipper, no pockets, rear kick pleat and fully lined
- Tall sizes available for pants

COLORS:

005 Tan, 007 Navy, 010 Black

SIZES:

Men's 28 – 54, Scale F

Ladies 0 – 18, 18W – 28W

Scale M & N

Ladies 0 – 18 Skirt Length 25",

18W – 28W Skirt Length 26"

DECORATION:

Embroidery

Prices apply to ladies size 0 – 20W and men's size 28 – 42 and are subject to change. Please inquire for pricing on larger sizes.







Synergy™ Washable Dress Pants and Skirt

FLAT FRONT PANT – 100% polyester, 6.2 oz.

2525 Men's | 8525 Ladies \$57.90

STRAIGHT SKIRT

9725 Ladies \$57.90

FEATURES:

- Men's: classic dress pant, straight fit, hook/eye closure, nylon zipper, two front/back pockets
- Ladies: mid-rise pant sits below the natural waist, straight fit, hook/eye closure, nylon zipper, two front pockets
- Skirt: drop waistline, back nylon zipper closure, back dart detail, no pockets, rear kick pleat and fully lined
- Tall sizes available for pants

COLORS:

007 Navy, 010 Black

SIZES:

Men's 28 – 54, Scale H

Ladies 0 – 28, Scale O

DECORATION:

Embroidery

Prices apply to ladies size 0 – 20 and men's size 28 – 42 and are subject to change. Please inquire for pricing on larger sizes.

washable

EASY CARE

PANT / SKIRT PERFORMANCE IS WASHABLE, COLORFAST, AND WRINKLE RESISTANT – TESTED AT 50 HOME WASH/DRY CYCLES.

NATURAL STRETCH



2525

8525

9725

8525





2588 | 8760



Microfiber Dress Pants with Repreve® Recycled Fibers

FLAT FRONT PANT – 77% regular polyester/23% recycled polyester, 5.7 oz.

2588 **Men's** | 8760 **Ladies**

\$45.90

FEATURES:

- Men's: easy fit with hidden waistband providing two inches of adjustment, straight fit, button and hook/eye closure, nylon zipper, two front/back pockets
- Ladies: mid-rise pant sits below the natural waist, straight fit, button and hook/eye closure, nylon zipper, two front pockets
- Repreve® fiber contains recycled materials
- Tall sizes available

washable

NATURAL
STRETCH

COLORS (Left, Top to Bottom):

010 Black, 207 Vintage Khaki,
079 Steel Grey

SIZES:

Men's 28 – 54, Scale H

Ladies 0 – 28, Scale O



SMART SCALES
BETTER FIT—EASIER PLANNING

DECORATION:

Embroidery

Prices apply to ladies size 0 – 20 and men's size 28 – 42 and are subject to change. Please inquire for pricing on larger sizes.

REPREVE

IT'S WHAT'S IN IT™

Repreve fiber contains recycled materials – including plastic bottles. When you see this symbol on the tag, remember: It's what's in it... that makes it recycled. With Repreve, you can be sure you're creating a reprieve for the planet.



Dress Pants and Skirt

FLAT FRONT PANT – 55% polyester/45% worsted wool, 11/11.5 oz.

2780 Men’s | 8783 Ladies \$71.00

PLEATED FRONT PANT

2680 Men’s \$71.00

STRAIGHT SKIRT

9789 Ladies \$71.00

FEATURES:

- Classic wool blend pants and skirt in year around weight
- Hook/eye closure, nylon zipper, two front/back pockets (ladies has no back pocket)
- Men’s with extended fly lining
- Skirt: traditional waistband, button closure, nylon zipper, no pockets, rear kick pleat and fully lined
- Tall sizes available for pants

SIZES:

Men’s 28 – 54, Scale F
Ladies 0 – 18, 18W – 28W, Scale M & N

NATURAL
STRETCH

DECORATION:

Embroidery

Prices apply to ladies size 0 – 20W and men’s size 28 – 42 and are subject to change. Please inquire for pricing on larger sizes.

	2680	2780	8783	9789
007 NAVY	•	•	•	•
009 DARK GREY	•	•	•	•
010 BLACK	•	•	•	•
019 CHARCOAL	•	•	•	•



9789



8783

2780

2680

NEW

signature

NAVY
SUITING





SUITING PERFORMANCE IS
WASHABLE, COLORFAST, AND
WRINKLE RESISTANT – TESTED AT
50 HOME WASH/DRY CYCLES.

Synergy™ Washable Suit Separates

SINGLE BREASTED SUIT COAT – 100% polyester, 6.2 oz.

3525 **Men's** | 6525 **Ladies** \$129.90

VEST

4525 **Men's** \$55.90

7526 **Ladies** \$59.90

SLEEVELESS TUNIC

7575 **Ladies** \$79.90

FLAT FRONT PANT

2525 **Men's** | 8525 **Ladies** \$57.90

STRAIGHT SKIRT

9725 **Ladies** \$57.90

FEATURES:

- Contemporary styling with lightweight natural stretch twill fabric
- Suit coats have polyester lining and inner mesh at shoulder/collar and elbows for quick drying
- Home laundry

MEN'S SUIT SEPARATES

- Coat: Single-breasted, modern fit, notch lapel, two button closure, welt breast pocket, two set-in flap pockets, inside pockets, and center back vent
- Vest: High button vest, two set-in pockets, self-fabric back, fully lined
- Pant: Modern straight-leg fit, flat front, hook/eye closure, nylon zipper, two front/back pockets, tall sizes available

LADIES SUIT SEPARATES

- Coat: Single-breasted, modern fit, notch lapel, two button closure, princess seams and front/back darts for shape, two front set-in pockets, inside pocket, shorter length sits mid-hip
- Vest: High button vest, two set-in pockets, self-fabric back, back belt with adjustable buckle, fully lined
- Sleeveless Tunic: Long tunic sits at low-hip, 3-button closure, two set-in pockets, princess seams for shape, fully lined
- Pant: Modern mid-rise pant sits below natural waist, straight fit, hook/eye closure, nylon zipper, two front pockets, tall sizes available
- Skirt: Modern drop waist straight skirt, no pockets, back dart detail and nylon zipper closure, rear kick pleat, fully lined

COLORS:

007 Navy, 010 Black (See page 98)

SIZES:

Men's Suit Coat, 36 – 58, Even Sizes Only
(Short, Regular, Long), Scale H

Men's Vest, S – 4XL, Scale H

Men's Pant, 28 – 54, Scale H

Ladies Suit Coat/Pant/Skirt, 0 – 28, Scale O

Ladies Vest/Sleeveless Tunic, XS – 3XL, Scale O

DECORATION:

Embroidery

Prices apply to men's coat size 36 – 48, men's pant size 28 – 42, ladies coat/pant/skirt size 0 – 20, vest/tunic size XS – XL and are subject to change. Please inquire for pricing on larger sizes.

washable

CH! SMART SCALES
BETTER FIT–EASIER PLANNING

NATURAL
STRETCH

NEW

**BLACK
SUITING**

See page 97
for details.

2525



3525



4525

8525



6525



9725



7526



7575

signature

**EASY
CARE**

SUITING PERFORMANCE IS
WASHABLE, COLORFAST, AND
WRINKLE RESISTANT – TESTED AT
50 HOME WASH/DRY CYCLES.



Professional Appearance Plus Washable Ease – That's Synergy

- Machine washable suiting
- Polyester lining with mesh at shoulders and elbows allows for quick drying
- Lightweight twill weave made from 100% polyester offers natural stretch
- Colorfast and wrinkle resistant – tested at 50 home wash/dry cycles



The choices are endless. Fine wool blends, pinstripes, or solids – this suiting is perfect for all occasions and comfortable year around.

Design Essentials



- Top collar and under collar die-cut to ensure smooth fit
- Front is fused for extra stability and shape retention
- Soft floating chest piece positioned for proper drape
- Sleeve lining stitched to armhole for smooth fit and comfort
- Top collar fused for stability
- Shoulder pad secured for shape retention
- Durable polyester lining used for pocketing
- Fully lined to extend the life of the garment
- Fused sleeve cuff interlining for shape retention
- Two-inch sleeve allowance for alterations
- Raised edges eliminate thread friction and securely fasten buttons in place



signature

Wool Blend Suit Separates

SINGLE BREASTED SUIT COAT – 55% polyester/45% worsted wool, 11/11.5 oz.

3680 **Men's** | 6680 **Ladies** **\$165.90**

HIGH BUTTON VEST

4680 **Men's** | 7680 **Ladies** **\$65.90**

FLAT FRONT PANT

2780 **Men's** | 8783 **Ladies** **\$71.00**

PLEATED FRONT PANT

2680 **Men's** **\$71.00**

STRAIGHT SKIRT

9789 **Ladies** **\$71.00**

FEATURES:

- Coat: Single breasted, full-fit, notch lapel, two matching button closure (ladies has one button), welt breast pocket, two set-in flap pockets, inside pocket, center back vent for men, fully lined
- Vest: High button vest, two set-in pockets, self-fabric back, fully lined
- Pant: Flat or pleated front dress pant, hook/eye closure, nylon zipper, two front/back pockets (ladies has no back pocket), men's has extended fly lining, tall sizes available (pants only)
- Skirt: Classic style straight skirt with no pockets, back button closure, nylon zipper, rear kick pleat, fully lined

SIZES:

Men's Suit Coat, 36 – 58 Even Sizes Only,
(Short, Regular, Long, Extra Long), Scale G

Men's Vest, S – 4XL, Scale I

Men's Pant, 28 – 54, Even Sizes Only, Scale F

Ladies Suit Coat, 0 – 28, (Regular, Tall), Scale S

Ladies Vest, XS – 3XL, Scale K

Ladies Pant/Skirt, 0 – 18, Scale M or 18W – 28W, Scale N

TALL
sizesNATURAL
STRETCH

DECORATION:

Embroidery

Prices apply to men's coat size 36 – 48, men's pant size 28 – 42, ladies coat size 0 – 20, ladies pant/skirt 0 – 20W, and men's/ladies vest size XS – XL and are subject to change. Please inquire for pricing on larger sizes.

	2680	2780	3680	4680	6680	7680	8783	9789
007 NAVY	•	•	•	•	•	•	•	•
009 DARK GREY	•	•					•	•
010 BLACK	•	•	•	•	•	•	•	•
019 CHARCOAL	•	•	•	•	•	•	•	•

NAVY
SUITING

2780

2680

3680

SHORT
XLONGALL THE SUIT COAT SIZES
YOU NEED FROM
SHORT TO EXTRA LONG

4680

6680

8783

7680

9789



**BLACK
SUITING**

*See page 23
for details.*



**CHARCOAL
SUITING**

*See page 23
for details.*





signature

Pinstripe Suit Separates

SINGLE BREASTED SUIT COAT – 55% polyester/45% worsted wool, 9/9.5 oz.
3660 **Men's** | 6660 **Ladies** \$165.90

FLAT FRONT PANT
2560 **Men's** | 8569 **Ladies** \$71.00

STRAIGHT SKIRT
9769 **Ladies** \$71.00

- FEATURES:
- Coat: Single breasted, full-fit, notch lapel, three matching button closure, welt breast pocket, two set-in flap pockets, inside pocket, center back vent for men, fully lined
 - Pant: Flat front dress pant, hook/eye closure, nylon zipper, two front/back pockets (ladies has no back pocket), men's has extended fly lining, tall sizes available (pants only)
 - Skirt: Classic style straight skirt with no pockets, back button closure, nylon zipper, rear kick pleat, fully lined

SIZES:
Men's Suit Coat, 36 – 58 Even Sizes Only, (Short, Regular, Long, Extra Long), Scale G
Men's Pant, 28 – 54, Even Sizes Only, Scale F
Ladies Suit Coat, 0 – 28, (Regular, Tall), Scale S
Ladies Pant/Skirt, 0 – 18, Scale M or 18W-28W, Scale N

TALL
sizes

NATURAL
STRETCH

DECORATION:
Embroidery

Prices apply to men's coat size 36 – 48, men's pant size 28 – 42, ladies coat size 0 – 20, ladies pant/skirt 0 – 20W and are subject to change. Please inquire for pricing on larger sizes.

SHORT
XLONG

ALL THE SUIT COAT SIZES
YOU NEED FROM
SHORT TO EXTRA LONG

	2560	3660	6660	8569	9769
007 NAVY	•	•	•	•	•
019 CHARCOAL	•	•	•	•	•



TIE IT ALL TOGETHER

*Strong impressions begin
with great neckwear.*





Neckwear

- Ties are 58" long, 3¼" wide
- Scarves vary in size by style
- Neckerchief has adjustable knot

SC52	FLORAL SCARF 31" Square, 100% Polyester	\$18.00
SC53	CHECKERBOARD CHIFFON SCARF 31" Square, 100% Polyester	\$18.00
MD00	MINI-DIAMOND TIE 100% Silk	\$23.00
SC56	SOLID CRINKLE CHIFFON SCARF 8"W x 54"L, 100% Polyester	\$18.00
SW00	WIDE STRIPE TIE 100% Silk	\$23.90
CD00	CIRCLES & DOTS TIE 100% Silk	\$23.00
SC54	CIRCLES & DOTS NECKERCHIEF 100% Silk	\$23.00

Prices subject to change.



THE SKINNY ON TIES
NOT TOO WIDE. NOT TOO THIN.
OUR 3¼" WIDE TIES ARE THE
IDEAL SIZE FOR TODAY'S STYLES.



SC52 | 010 Black



SC53 | 059 Brick



SC53 | 093 Orange



SC53 | 001 Blue



MD00 | 079 Steel Grey



SC56 | 040 Cream



SW00 | 010 Black



CD00 | 202 Safari



SC54 | 202 Safari



MD00 | 059 Brick



SC56 | 063 Wine



SW00 | 308 Agave



CD00 | 007 Navy



SC54 | 007 Navy



MD00 | 093 Orange



SC56 | 007 Navy



SW00 | 063 Wine



CD00 | 014 Jade



SC54 | 014 Jade



MD00 | 001 Blue



SC56 | 001 Blue



SW00 | 904 Storm Cloud



CD00 | 700 Marigold



SC54 | 700 Marigold



Neckwear

- Zipper tie has nylon zipper, 20" long, 3" wide
- Traditional ties are 58" long, 3 1/4" wide
- Scarves vary in size by style

ZT00	ZIPPER TIE 100% Polyester	\$15.00
SC57	SOLID SATIN MIXED WEAVE SCARF 31" Square, 100% Polyester	\$18.00
TS00	TONAL STRIPE TIE 100% Polyester	\$18.00
DT00	DIAMOND & DOTS TIE 100% Polyester	\$19.50
SC51	FLORAL CHIFFON SCARF 31" Square, 100% Polyester	\$18.00
SC52	FLORAL SCARF 31" Square, 100% Polyester	\$18.00
RP00	NARROW STRIPE TIE 100% Polyester	\$18.00
TR00	TRELLIS TIE 100% Silk	\$21.90
SC56	SOLID CRINKLE CHIFFON SCARF 8"W x 54"L, 100% Polyester	\$18.00

Prices subject to change.

MOD
WIDTH

THE SKINNY ON TIES
NOT TOO WIDE. NOT TOO THIN.
OUR 3 1/4" WIDE TIES ARE THE
IDEAL SIZE FOR TODAY'S STYLES.

Knot Problems? Not a Problem!

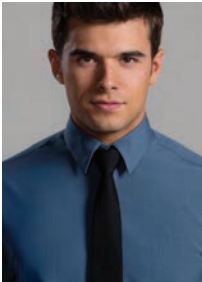
Our Zipper Tie's innovative closure makes perfect neckwear as easy as... grasp... pull... done!



Grasp the zip knot.



Pull down on the tail.



Done!



ZT00 | 010 Black





SC57 | 501 Slate



TS00 | 012 Red



SC51 | 952 Navy/Red



RP00 | 012 Red



TR00 | 012 Red



SC57 | 014 Jade



TS00 | 007 Navy



SC51 | 951 Black/Royal



RP00 | 010 Black



TR00 | 412 Powder Blue



SC57 | 010 Black



TS00 | 010 Black



SC52 | 010 Black



RP00 | 001 Blue



SC56 | 007 Navy



SC57 | 902 Titanium



DT00 | 010 Black



SC52 | 504 Grape



RP00 | 048 Gold



SC56 | 040 Cream



Neckwear

- Ties are 58" long, 3¼" wide
- Twisted knot ascots have Velcro® neck closure
- Tulips have adjustable strap with hook/eye closure
- Scarves vary in size by style

QS00	QUINT STRIPE TIE 100% Polyester	\$18.00
NT00	NUCLEUS TIE 100% Silk	\$23.90
NT60	NUCLEUS TWISTED ASCOT 50% Silk / 50% Polyester	\$23.90
PS00	PINSTRIPLE TIE 100% Silk	\$21.90
PS60	PINSTRIPLE TULIP ASCOT 100% Silk	\$21.90
SC57	SOLID SATIN MIXED WEAVE SCARF 31" Square, 100% Polyester	\$18.00
SC60	SPATTER FLORAL CHIFFON SCARF 8"W x 54"L, 100% Silk	\$21.90

Prices subject to change.





QS00 | 902 Titanium



SC57 | 902 Titanium



NT00 | 059 Brick



PS00 | 018 Mocha



PS60 | 018 Mocha



QS00 | 059 Brick



SC60 | 010 Black



NT60 | 059 Brick



PS00 | 079 Steel Grey



PS60 | 079 Steel Grey



QS00 | 049 Antique Gold



SC60 | 007 Navy



NT00 | 701 Inca Gold



NT60 | 701 Inca Gold



PS00 | 007 Navy



PS60 | 007 Navy



QS00 | 007 Navy



NT00 | 403 Sapphire



NT60 | 403 Sapphire

**MOD
WIDTH** THE SKINNY ON TIES
NOT TOO WIDE. NOT TOO THIN.
OUR 3¼" WIDE TIES ARE THE
IDEAL SIZE FOR TODAY'S STYLES.



CUSTOM EMBROIDERY
It's easy, convenient
and affordable!

Stitching, not Stressing

One Stop...One Step. Making Decoration Easy.

We offer:

- Shop and decorate in one location
- No minimums – small or large orders are easily produced (call for turn time on larger orders)
- Quick turns (3 to 4 days) once the decoration is approved
- Personalization with up to three lines is available



A

B

C

D

E

F

G

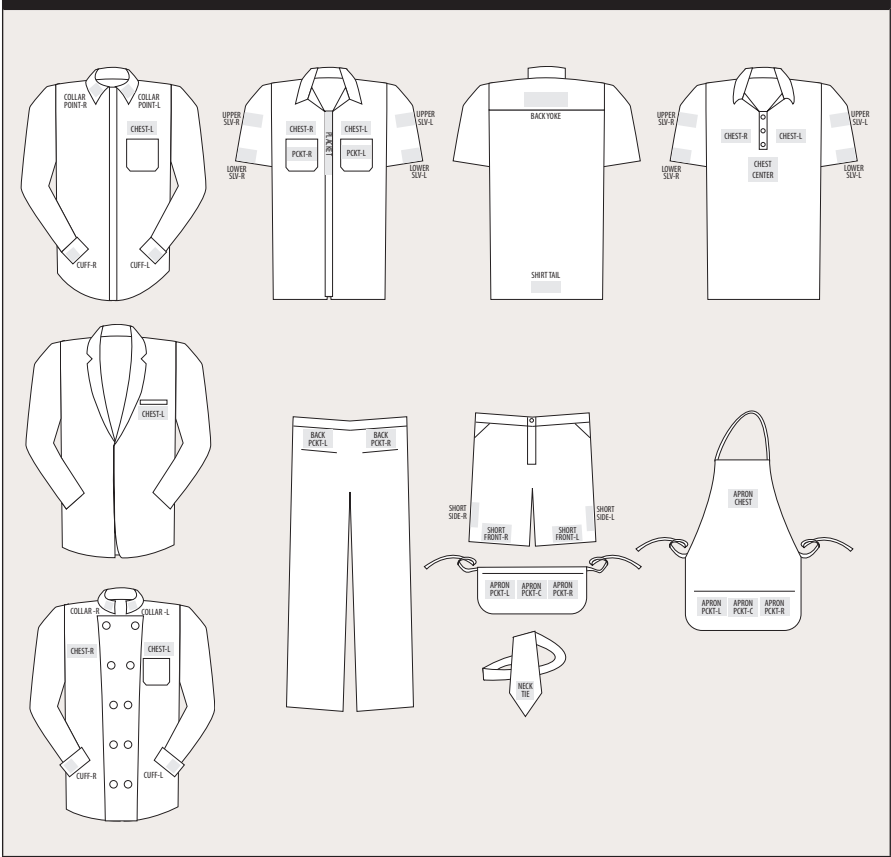
Stand out from the crowd with stylish placket embroidery. Standard options include:

- | | |
|-----------------|---------------------|
| A Four Stars | E Falling Leaves |
| B Mini Checks | F Music Notes |
| C Trellis Loops | G Elegant Toothpick |
| D Card Symbols | |



**PUT YOUR BRAND ON CENTER
(OR LEFT...MAYBE RIGHT) STAGE.**
Placement matters, so we offer a wide
variety of options to fit your branding needs.

STANDARD EMBROIDERY AND EMBLEM LOCATIONS



STANDARD FONTS

BLOCK block
BRUSH SCRIPT brush script
BRANTFORD brantford
Old English Script custom script
GOUDY BOLD goudy bold
HOB0 hobo
OLD ENGLISH old english
RUSS TIMES russ times
SCRIPT script

ACCEPTABLE ARTWORK

Digitized Tape Files: .DST
Artwork Files: .JPG .TIF .PDF

NUMBER OF PIECES PER GARMENT PRICE

STITCH COUNT	1-5	6-11	12-47	48-143	144-499	500+
1-5,000	\$8.00	\$7.00	\$4.50	\$4.00	\$3.70	CALL
5,001-7,000	\$8.00	\$7.00	\$5.10	\$4.50	\$4.00	CALL
7,001-10,000	\$9.00	\$8.00	\$5.70	\$5.10	\$4.60	CALL

Over 10,000 stitches, add \$0.50 per 1,000 stitches.
Add \$0.50 per color for logos with more than 9 colors.



Image Apparel Made Easy